



This publication is very special to us. Each year, we take great pleasure in celebrating the work of our artists and designers in Art and Textiles. Whilst we enjoy the exhibits in person around school, it is also pleasurable to have a tangible and informative visual catalogue that showcases each student's creative achievements.

The range of disciplines explored by our groups is contemporary, broad, exciting and personal. Projects continue to push boundaries as students build on their own aesthetic identity. This year, we have enjoyed seeing ambitious charcoal drawing on a huge scale, digital painting and photography, mixed media sculpture, jewellery making, exceptional embroidery and exquisite printed textiles.

Our learning spaces, including The Studio for A Level students and The White Room have enabled us to host Art and Textiles displays for examiners, the Arts Festival and our annual Spring Collective. Our creative staff and students have plenty of opportunities to be flexible, and extend investigations and concepts within a supportive environment. I hope you enjoy this publication, which reflects another highly successful year in Creative Arts.

Mrs Mel Beacroft
Head of Creative Arts

@ArtsNHS

Art & Design



FREYA AINSWORTH

GCSE - Art & Design

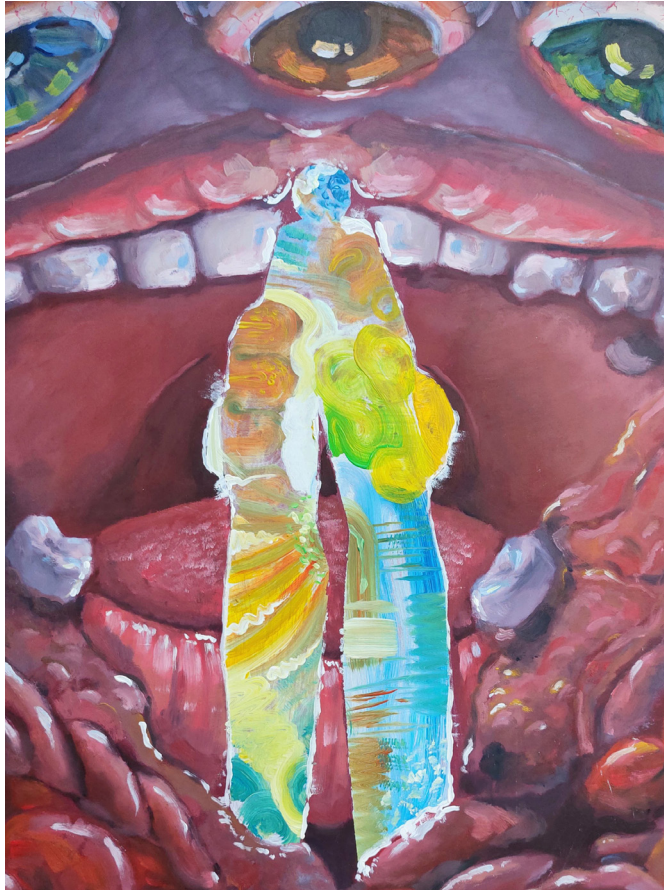


Freya's ceramic sculptures share a strong theme. Her interest in creatures and marine life is clear and she carefully painted pieces to create a cohesive collection of beautifully executed characters.



NICOLE ANI

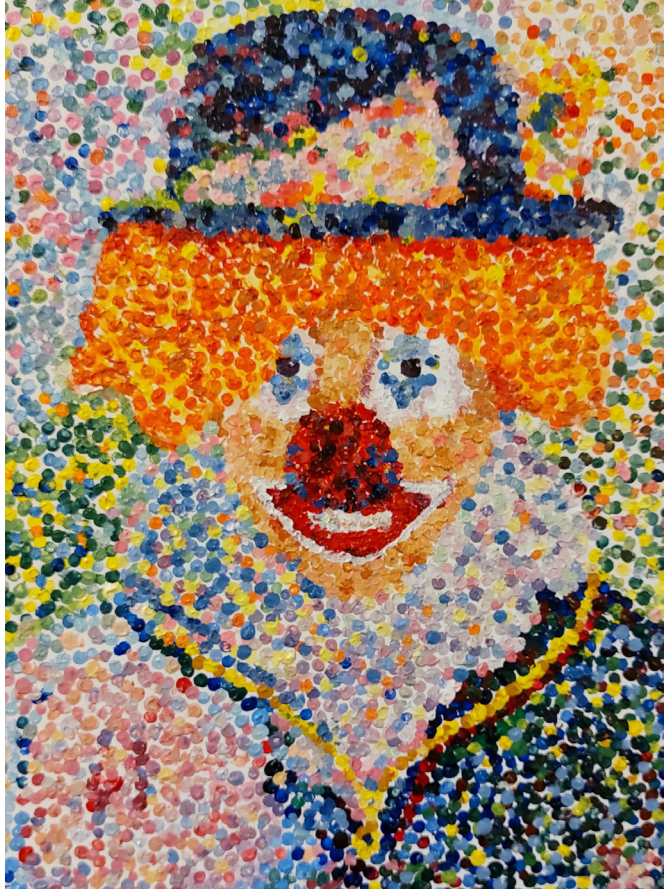
GCSE - Art & Design



Nicole's use of bright colours and mixed media helped her to create exciting, surrealistic imagery reflecting her interest in the macabre and the unexpected. She also experimented with three dimensional forms by creating figurative shapes fermenting in glass bottles. Sensitive drawings and paintings featuring goats and other mythical insects lead to an outstanding sculpture of a fly-like woman.

ANNA ATHERALL

GCSE - Art & Design



Anna used paint and printing techniques in combination with various drawing tools to carefully investigate her themes of both the circus and the inner exploration of human biology. She also had fun with various printing techniques such as etching and screenprinting to create refined and thoughtful images.



LOIS BEACROFT

GCSE - Art & Design



Lois created an exciting and extensive body of work exploring flowers and textures across a broad range of media, including large scale paintings, photography and screen printing. The role of women in society was also a strong message in her work as she explored the presentation, appearances and judgements that surround this theme. Lois's experimentation and development of techniques made for a creative display.

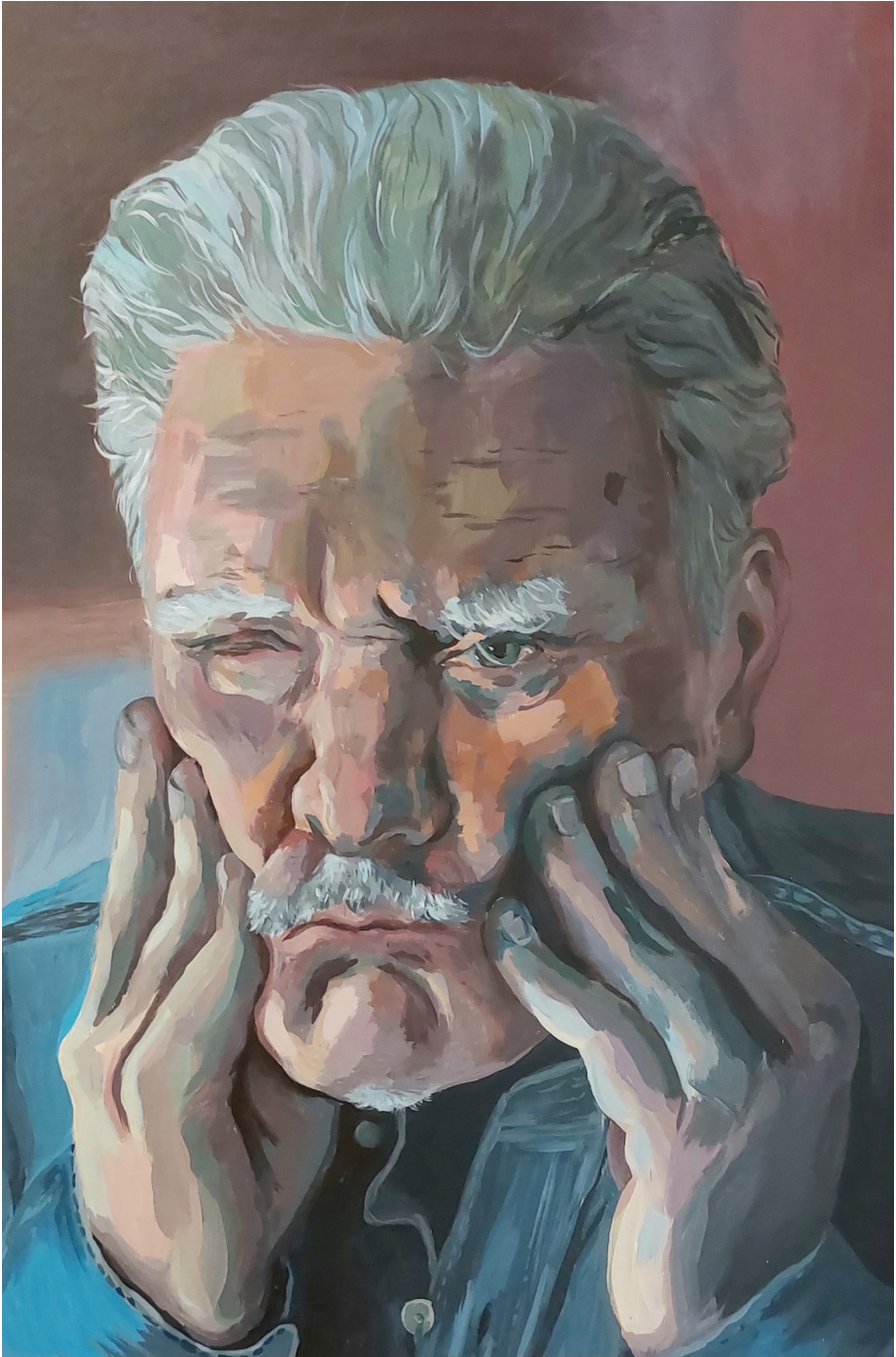


LAURA CHARLES

GCSE - Art & Design



Laura created sophisticated and exciting work across a large range of art and design disciplines. Her digital and analogue knowledge of photography shines through her exhibition and she used Adobe Illustrator to design her linocuts, so that she could carefully plan which areas would hold the ink. Her expressive and energetic large charcoal of her friend Emma is sensational.



EZ COOKE

GCSE - Art & Design



Ez's excellent use of oil and acrylic paint is evident in her beautiful portraits, many of them exploring her own emotional expressions within self portraits. She carefully combined her sensitive brushwork with considered use of colours to create an emotional impact; she has achieved striking appearances within her portrait studies.



EVA GASSON

GCSE - Art & Design



Eva's artistic practice centred on her original character designs using watercolours, paints and drawing tools to create beautifully detailed recordings. References to iconic Art Deco portraits led to engaging studies. She used her personal photography to inspire many ideas and compositions, and her self portraits show a mature and confident style of painting.



ALEC HARPER

GCSE - Art & Design

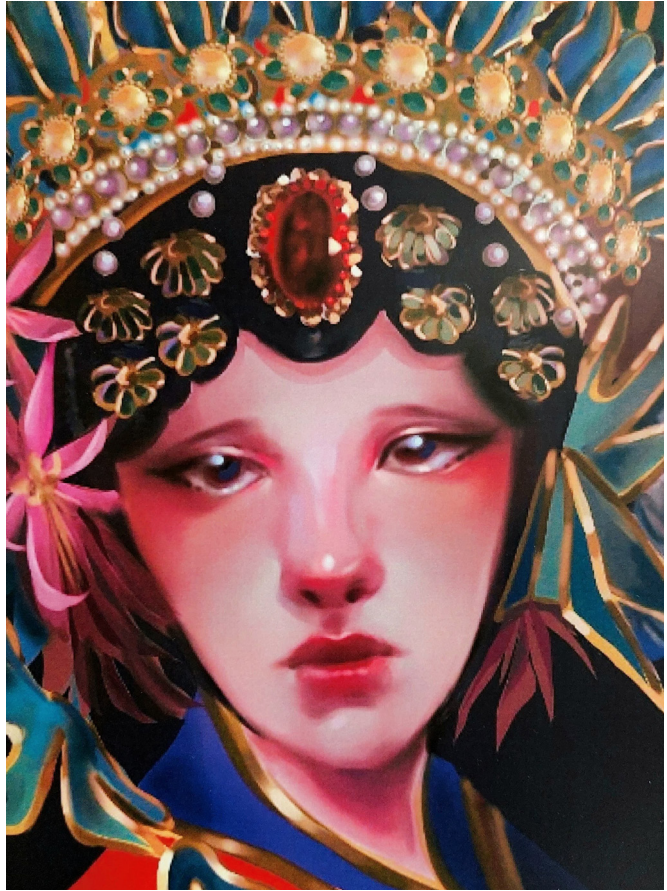


Thought provoking personal photography, prints and paintings follow Alec's investigation of gender fluidity. He found his inspiration in the representation of several influential figures such as Marilyn Monroe, which led to the studies of his friends and his brother in edgy compositions. Alec's sculptural forms of mythological beasts were also highly impressive.



LI HOANG

GCSE - Art & Design



Li's work included a strong personal theme, centred on her cultural background and interests in mythology. Encompassing several mythological characters and tales, she painted her own interpretation of gods and goddesses based on Renaissance references. Li's incredibly detailed portraits contributed to a fine exhibition.



JULIA OKOWINSKA

GCSE - Art & Design



Julia is an outstanding artist with a particular skill in drawing with pen and inks. The qualities of her lines are excellent and expressive, with personal and original subject matter and intriguing concepts. She designed a chef, mermaids, and explored cultural characters including Pierrot. These ideas then formed exciting final outcomes including an acrylic painting on canvas and a collection of digital paintings and drawings.



SHRUTHI PADMABUSHAN

GCSE - Art & Design



Shruthi's skill as a painter is evident in her successful exhibition of paintings, drawings and prints. Her detailed approach to drawing buildings is clear and she used the etching tool expressively to create a set of rose drypoints.



PRACHI PATEL

GCSE - Art & Design



Prachi's interest in architecture flows through her exhibition with exciting and lively mixed media pieces, including lino prints, collages and colourful silk screens.



RASIKA PIRABA

GCSE - Art & Design



Rasika created intensely detailed drawings and paintings of her family. Her handling of pencils and fineliners was impressive as she explored line, texture and pattern. As a painter, Rasika mixed flesh tints and tones with expertise and her brushwork is expressive, creating highly sophisticated outcomes.

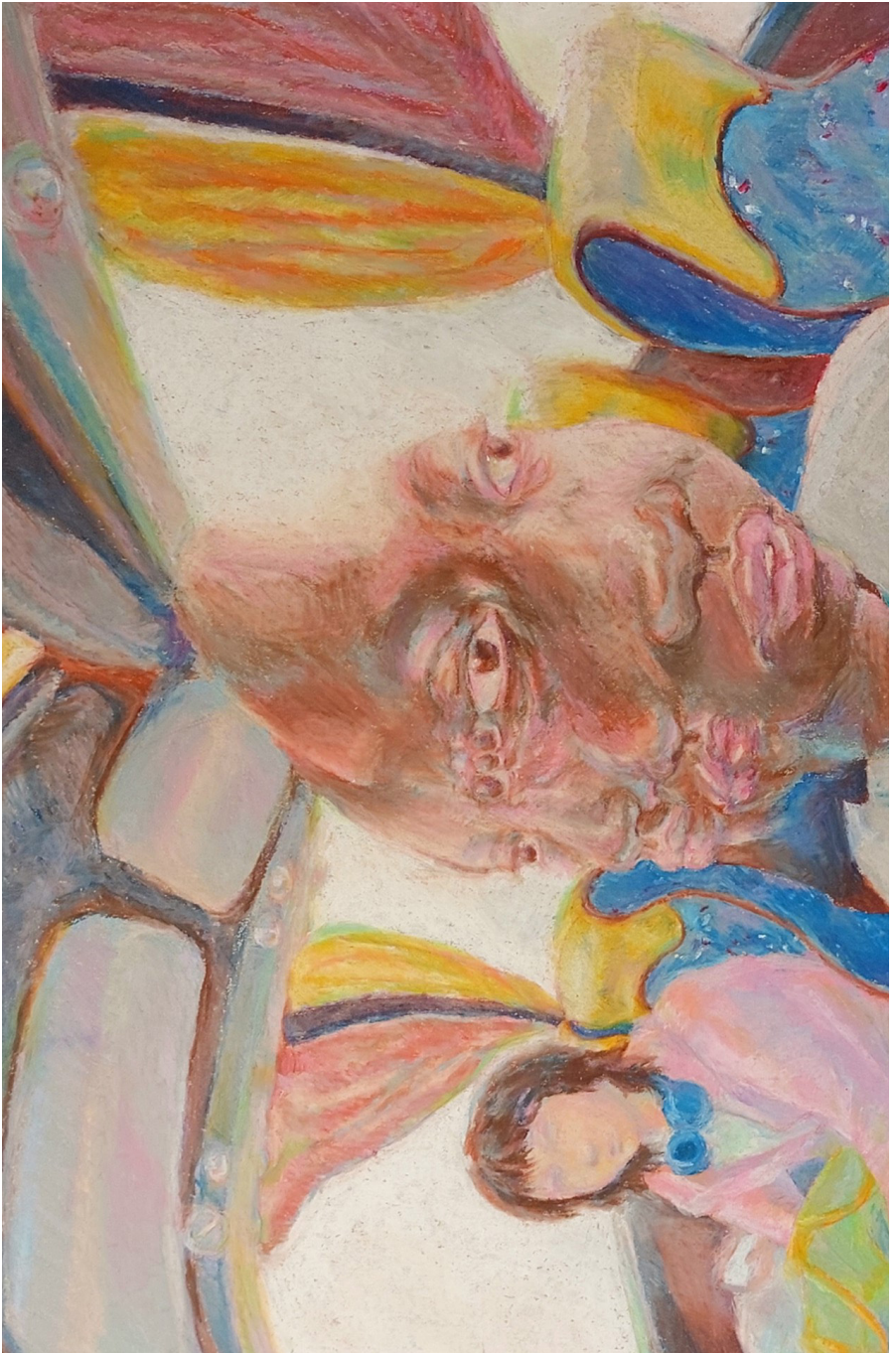


LIZZIE TANSLEY

GCSE - Art & Design



Lizzie created a fantastic collection of prints, including silk-screens, drypoints and linocuts. She learned how to plan and execute a successful reduction lino print and her drypoint etching of a fossil is outstanding.

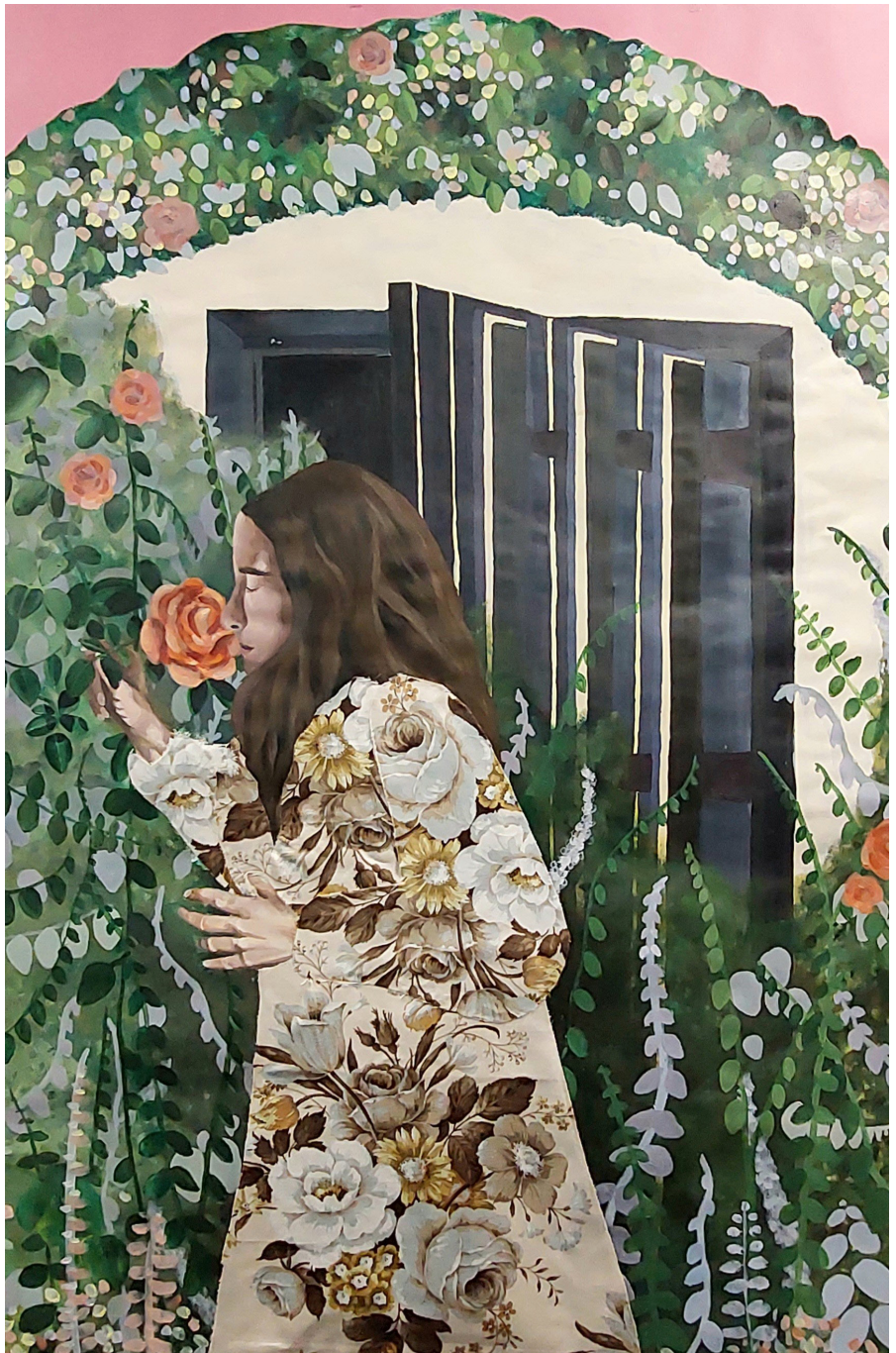


AMÉLIA WONG

GCSE - Art & Design

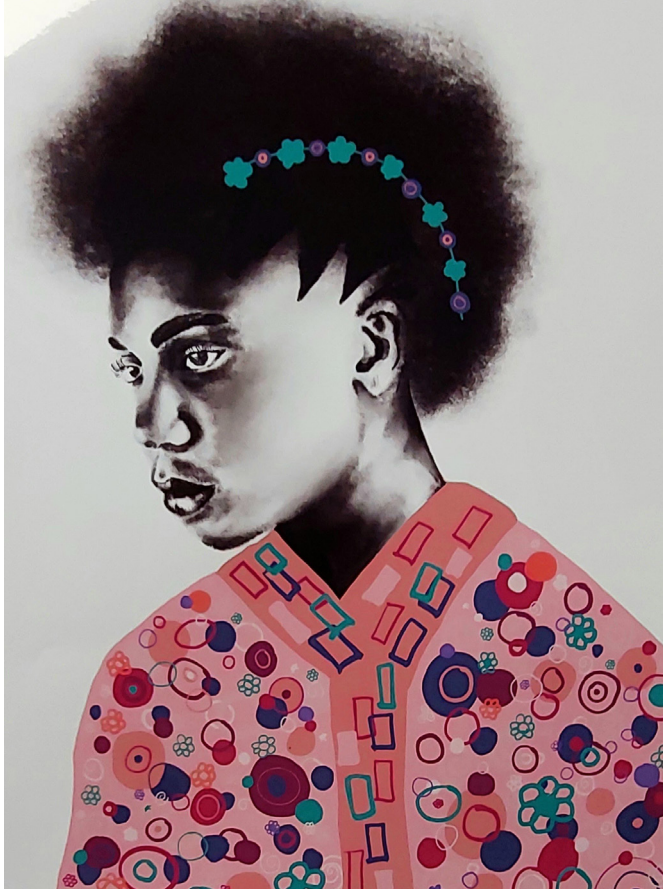


For her examination, Amélia explored distortion and multiple viewpoints, using image manipulation to alter faces and groups of her friends. She used drawing tools with great skill to capture exaggeration and interesting perspectives.



ROSEANNA BEALE

A LEVEL - Art & Design

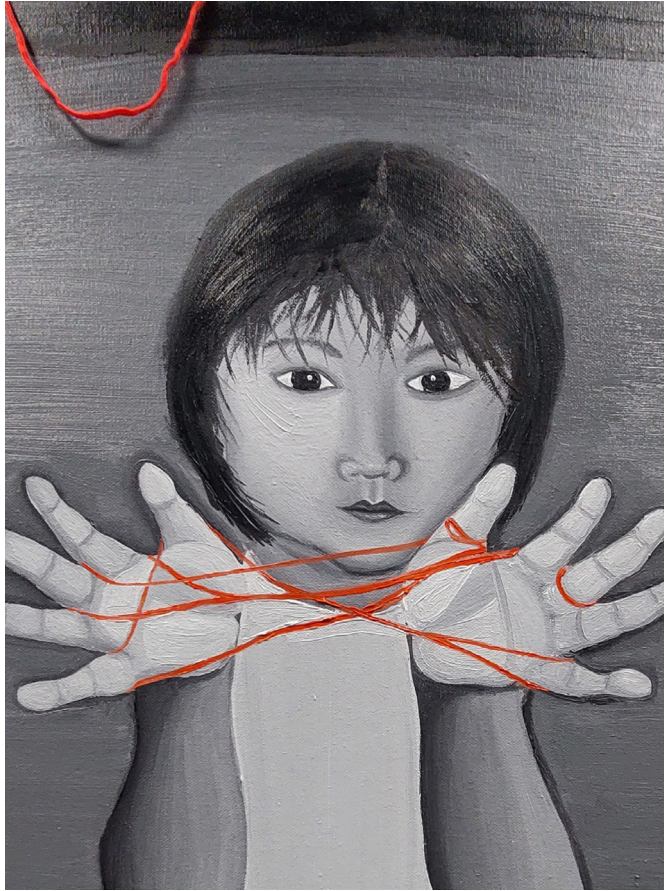


Rosie created very personal art, which included self portraiture in charcoal and beautifully decorative pieces centred on her sister Frankie, using Gustav Klimt as inspiration. Her sense of pattern and design is evident throughout her extensive collection, as Rosie created compositions with acrylics, wallpapers and gold leaf. She is also a very able printmaker with wonderfully detailed and expressive drypoints.



ANA XIANG SANCHEZ-THOMPSON

A LEVEL - Art & Design



Ana's coursework investigated Surrealism and we were so impressed with how she linked this to her surroundings, synthesising Giorgio de Chirico's strong shadows and sense of impending doom, with mysterious and nightmarish scenes from Northampton's iconic buildings such as the Express Lifts Tower. Her examination component was highly personal with Ana drawing on her Spanish and Chinese heritage for her investigations and final piece.

Textile Design



NICOLE ANI

GCSE - Textile Design



Nicole's work takes inspiration from Chinese Opera, she has explored a range of decorative techniques including hand embroidery and crochet. Nicole has chosen a rich colour palette of red with gold highlights to represent heroism, integrity and loyalty.



KATIE ATHERALL

GCSE - Textile Design



Katie has used the title 'A Cultural Journey' to explore a range of creative textiles techniques including weaving, sublimation print and free machine embroidery. Her research led her to explore the use of three dimensional embroidered flowers together with bias cutting of satin fabric.



JASMINE CAMPION

GCSE - Textile Design

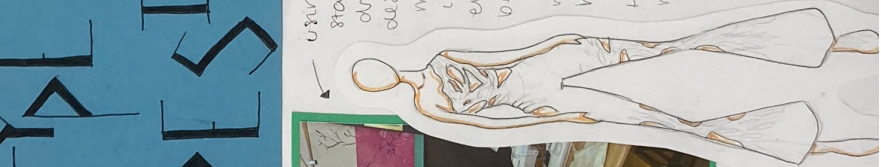


Jasmine's work explores the title 'A Cultural Journey' through a range of investigations into creative textiles techniques. These include free machine embroidery, sublimation printing and embellishment. Her research led her focus on the work of Fashion Designer Pierre Balmain, which, in turn, has inspired the design of an elegant hand finished evening gown.

PROTOTYPE DESIGN

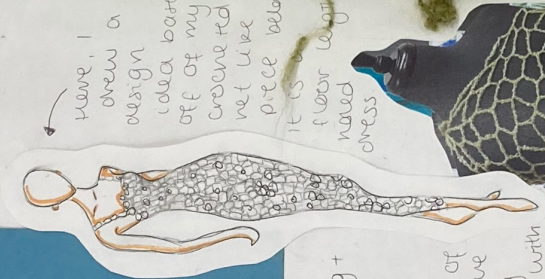


Have I drew a design idea based off of my calico piece.

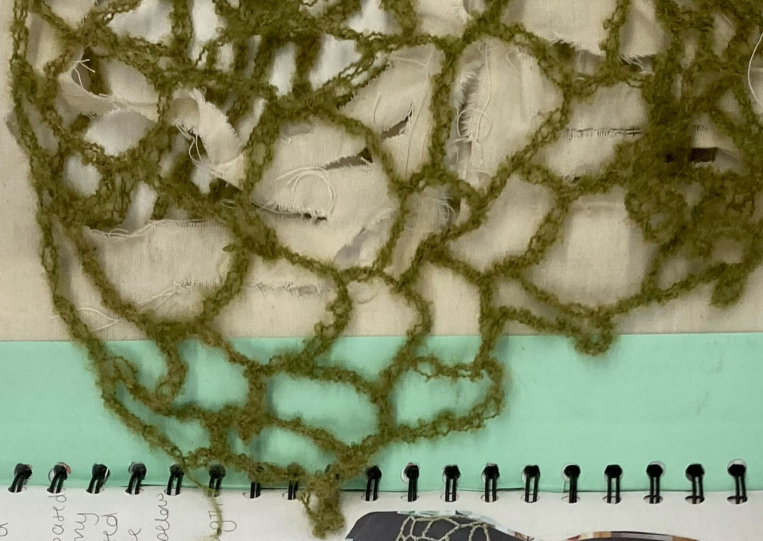


using calico, I started cutting + draping my design onto a mannequin inspired off of everything I've been looking into to do with ripping + creating holes in the fabric.

Have, I created a net-like piece and draped it over the mannequin. I love how it turned out!

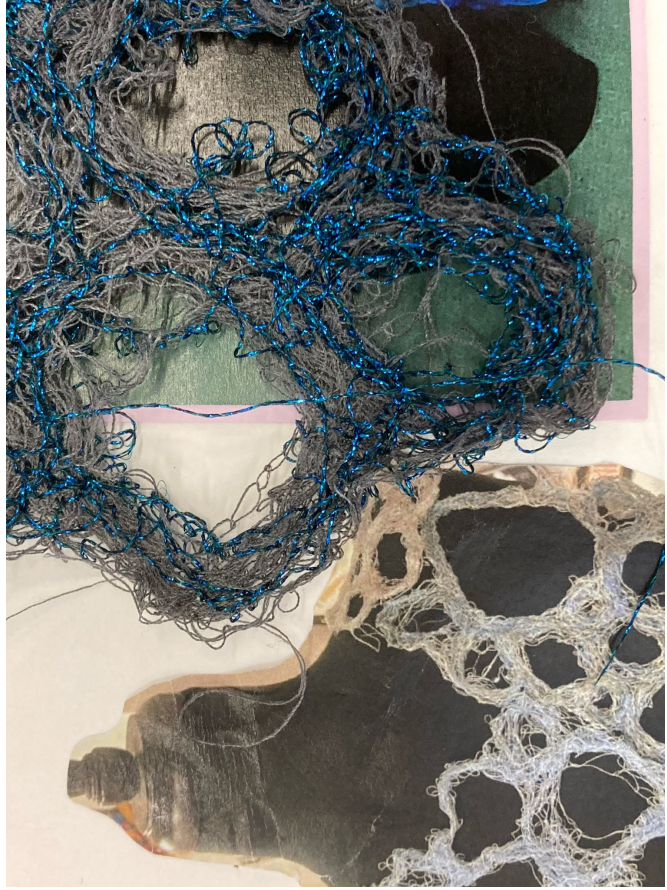


Have, I drew a design idea based off of my created net like piece below. It is floor length, no dress



EZ COOKE

GCSE - Textile Design



Ez uses the title 'Layers' to explore a range of contemporary textiles concepts including dissolvable fabrics, free machine embroidery and melted synthetic fibres. For her final piece, Ez mixes a simple elegant evening dress with a textured bolero bodice.



© 2000 by the
Museum of Modern Art
Photograph by
Christiane Borchers
Copyright 2000

NANCY DAVIES

GCSE - Textile Design



Nancy has explored the project title 'A Cultural Journey' to follow an African inspired theme. She has developed monochromatic lino prints and needle felted textured pieces, which have been inspired by tribal shape and pattern.



CONSTANCE HARVEY

GCSE - Textile Design



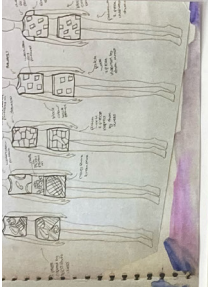
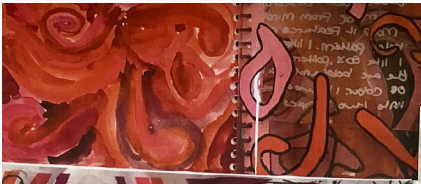
Through exploring the theme of 'Layers', Constance has researched layers within architecture. Using embroidery to add texture to geometric shapes, she has developed layers of fabric working together to create surface interest.

KEIRA HARDIKER

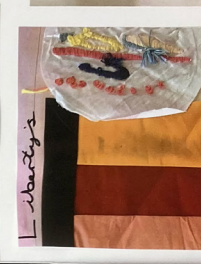
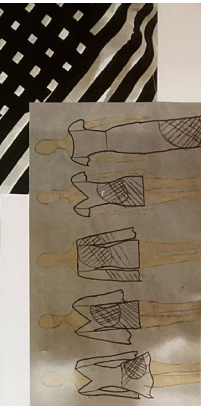
GCSE - Textile Design



Keira has created a project around the title 'Romance'. She has explored lingerie silhouettes in detail and created a feminine bodice which is decorated with sublimation print, needle felting and three dimensional embroidered leaves.

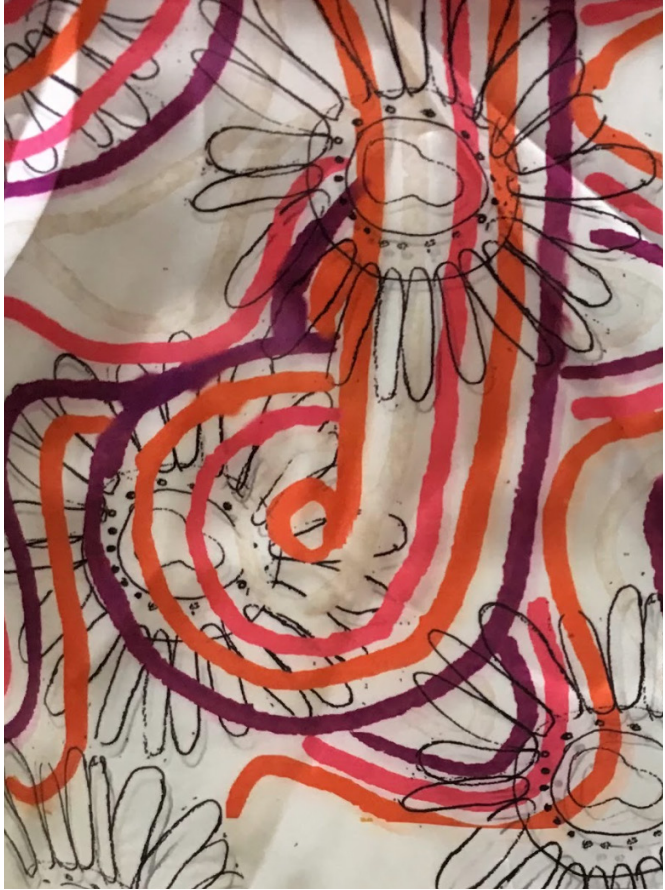


Handwritten notes in a notebook, including the word "TRANCE" and other illegible text.

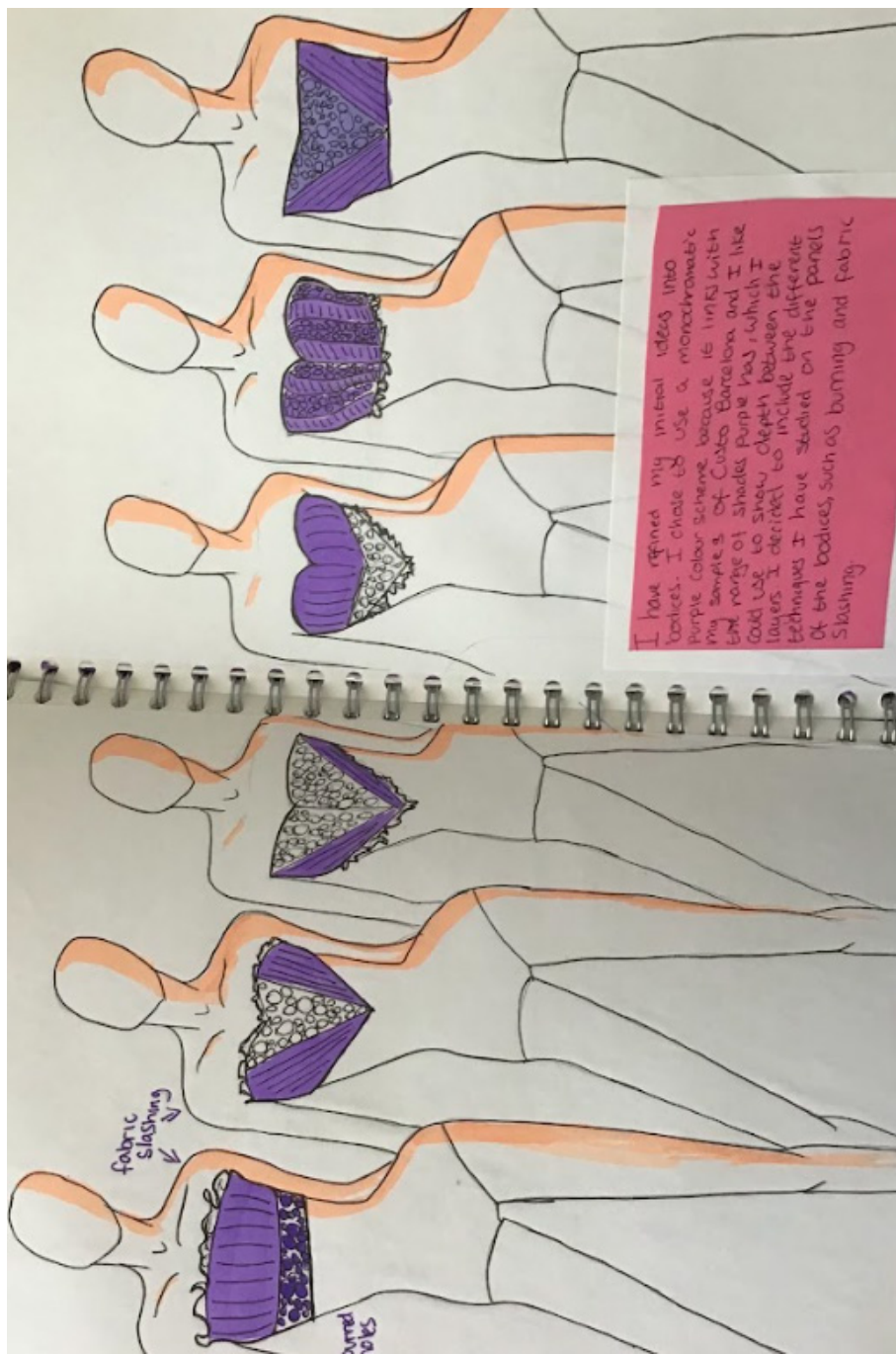


ANNABEL LLYOD

GCSE - Textile Design



Annabel's project represents a journey through fashion history over the 20th century. Annabel has focused particularly on the 1960s, and 70s. She has used sublimation printing, screen printing and embroidery, with a vibrant colour palette of orange and pink.



I have refined my initial ideas into bra's. I chose to use a monochromatic purple colour scheme because it links with my samples of Coles Barcelona and I like the range of shades purple has, which I could use to show depth between the layers. I decided to include the different techniques I have studied on the panels of the bodies, such as burning and fabric slashing.

fabric slashing

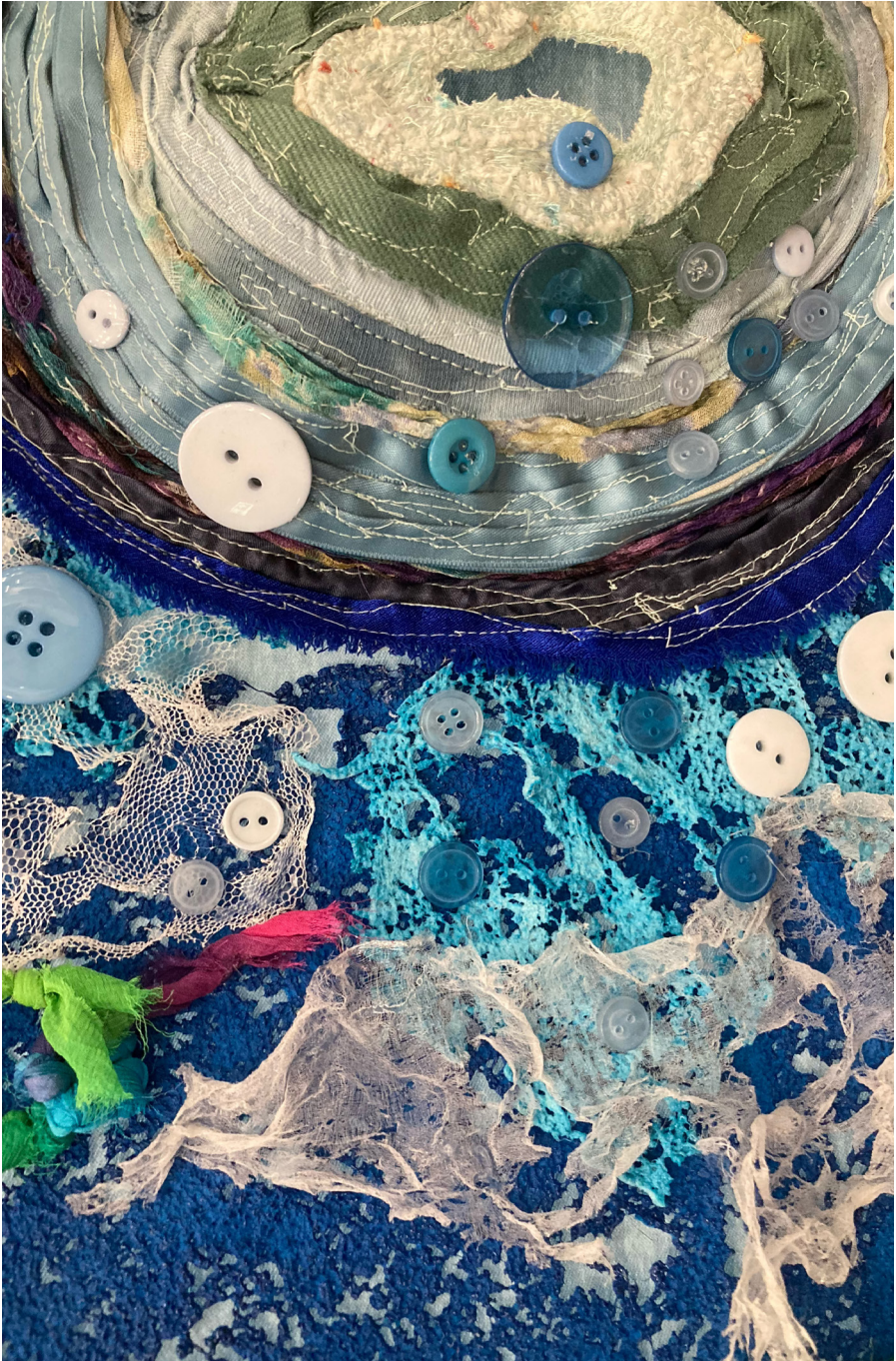
Armed notes

HATTIE MCCABE

GCSE - Textile Design



Hattie has explored the theme 'Layers'. She has worked creatively by melting synthetic fibres and fabrics to form layers of overlapping holes. Her final piece is a textured bodice.

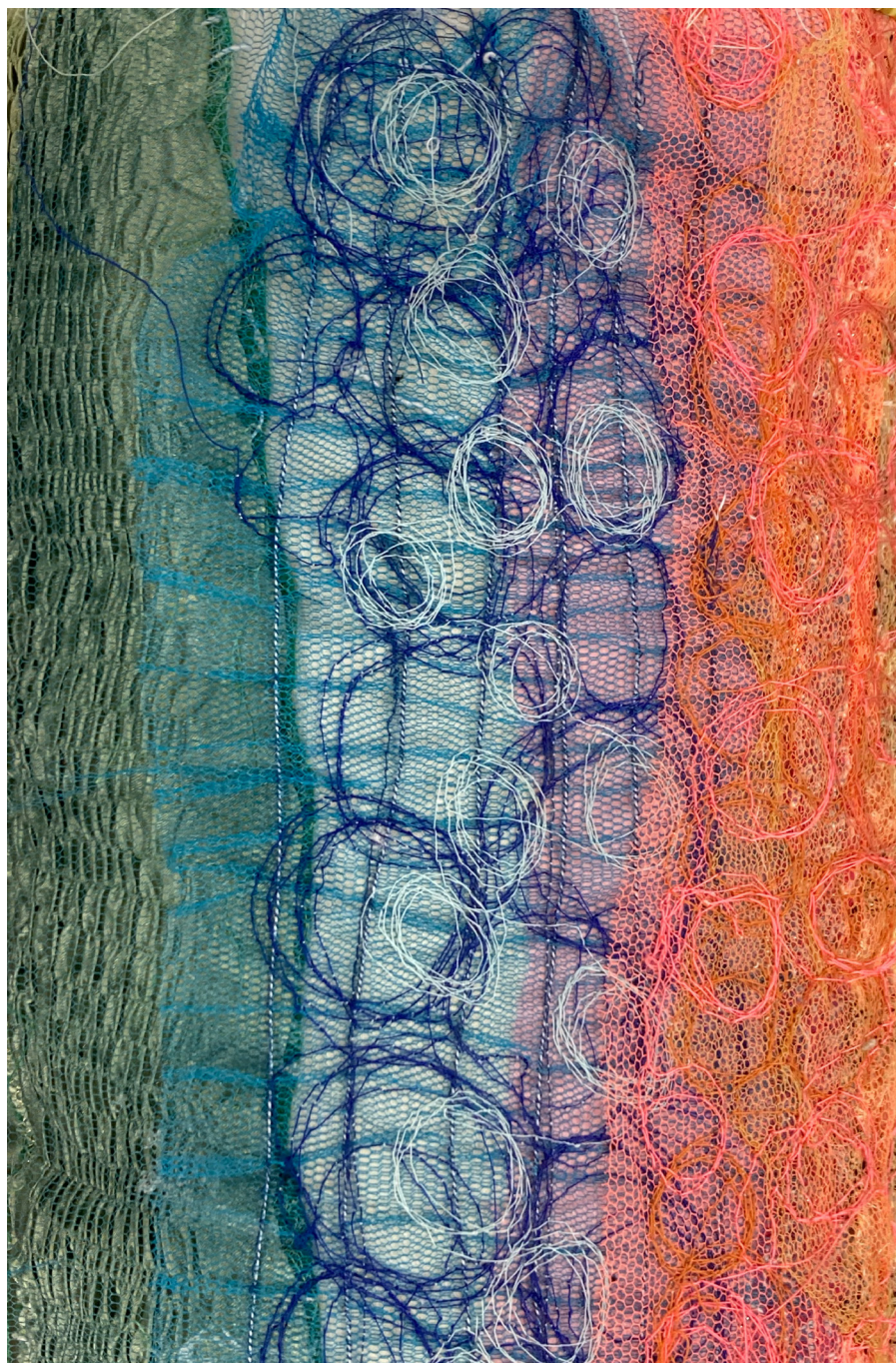


RASIKA PIRABA

GCSE - Textile Design



Rasika has investigated the theme 'Layers'. Her work explores manipulation of mixed fabrics, layered and stitched together to create new textural surfaces. Her final piece is a wall hanging which is inspired by her Sri Lankan heritage.





Research sample inspired by a contemporary fashion piece I had seen on my research. I created this by ripping up my fabric, losing the fabric's original structure. I have used a large pile of starting needles and began to weave the fabric together. I have used a large pile of starting needles and began to weave the fabric together. I have used a large pile of starting needles and began to weave the fabric together. I have used a large pile of starting needles and began to weave the fabric together.

MIA WATSON

A LEVEL - Art & Design



Mia has taken inspiration from the colour pink. Research into this has led Mia to investigate diverse sources such as Barbie, Balmain and Rose Bertin. Her final design featured a two piece outfit inspired by 18th century silhouettes in pink embroidered brocade fabric with a hand printed lining.



YASMIN JEPSON

A LEVEL - Textile Design



Yasmin has taken inspiration from her Armenian cultural heritage. A range of creative textiles techniques have been explored including sublimation printing, couching and quilting. Yasmin's final piece is a heavily decorated fully lined tailored jacket.

Northampton High School
Newport Pagnell Road
Hardingstone
Northampton
NN4 6UU

www.northamptonhigh.co.uk
01604 765765
@ArtsNHS

2024



NORTHAMPTON
HIGH SCHOOL

GDST
GIRLS' DAY SCHOOL TRUST

