



This publication is very special to us. Each year, we take great pleasure in celebrating the work of our artists and designers in Art and Fashion & Textiles. Whilst we enjoy the exhibits in person around school, it is also pleasurable to have a tangible and informative visual catalogue that showcases each student's creative achievements.

The range of disciplines explored by our groups is, as usual, broad, exciting and personal. Projects continue to push boundaries as students build on their own aesthetic identity.

Our learning spaces, including The Studio for A Level students, open up so many opportunities to extend investigations and concepts, within a supportive environment. All students have flourished and prepared their digital and physical portfolios, some of which are accessible through scanning the QR codes, to learn more about individual artists. I hope you enjoy this publication, which reflects another successful year in Creative Arts for our outstanding students.

Mrs Mel Beacroft
Head of Creative Arts

@ArtsNHS

Art & Design



NATASHA BAILEY

GCSE - Art & Design



Natasha developed an exciting link to Edward Hopper's starkly lit, New England moody interiors, which often contained lonely figures, empty windows and intrigue. Natasha used her own personal photography around cafes and cities, employing excellent brushwork and paint application to emulate Hopper's style, bringing her own techniques and characteristics to her atmospheric compositions.



CECILY BULLOCK

GCSE - Art & Design



Cecily's work included a strong personal theme, centered on her love for her family and close bond with her sister, Maisie. Encompassing several portraits of her sister, her work includes lino-cuts, etching and screenprinting. Cecily's incredibly detailed portraits are a fine exhibit.



CAITLIN COGGIN

GCSE - Art & Design



Caitlin's exciting use of mixed media and acrylic paint is evident in her beautiful landscapes, inspired by personal photography and Art Deco. She carefully combined her sensitive brushwork to achieve a striking appearance within her landscapes.



GRACE CROWLEY

GCSE - Art & Design



Grace fully explored printmaking and built up a large collection of drypoint etchings, screenprints and linocuts. Her attention to detail when incising and carving lines was fantastic and many of her designs focus on family members, with exciting use of mixed media to create colourful backgrounds. Her skull lino prints were a particular highlight in Grace's extensive exhibition.





ASHMITA DAS

GCSE - Art & Design



Ashmita's books are a joy to investigate. She thoroughly explored themes with exquisite use of media as she experimented and creatively investigated her subject matter. Ashmita is a very able painter. It is exciting to see that she focused on her friends as inspiration for the outstanding portraits in her exhibition, often with contemporary patterns and original background ideas. Her drawings are highly sensitive and this level of skill transferred easily through to Ashmita's extensive printmaking.



HANNAH DAVIES

GCSE - Art & Design



Hannah's artistic practice centered on her original work referencing mostly primary sources. She used acrylic paints, watercolours, inks and drawing tools to create beautifully detailed recordings, many of which are observational studies of her family members.





AIBHILIN FRENCH

GCSE - Art & Design



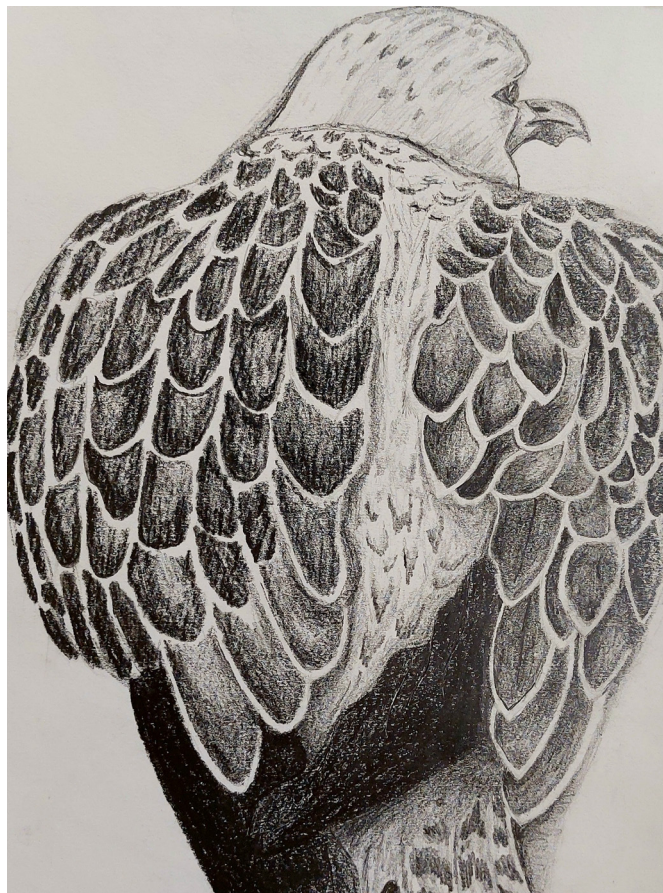
Aibhilin used watercolours to capture details and washes in her flowers, portraits and crystal studies. Her screen printing was lively, decorative and full of patterns and texture through inks and other mixed media. Aibhilin's sculptures focused on heads that were constructed from wire, powertex, mod roc and polystyrene, which she shaped and fused brilliantly to create an exciting and expressive human head.





ELLA NICHOLAS

GCSE - Art & Design



Sensitive drawings and paintings featuring flowers have made Ella's exhibition magical. Her investigation into the skeletal appearance of leafs and trees show us incredible detail that lead her to the exploration of the human skeleton.





GEORGIA MCQUEEN

GCSE - Art & Design



Georgia's use of personal imagery and original references helped her to create a thought provoking display. She also experimented with using collage to create compositions to reflect her understanding of the world around her.



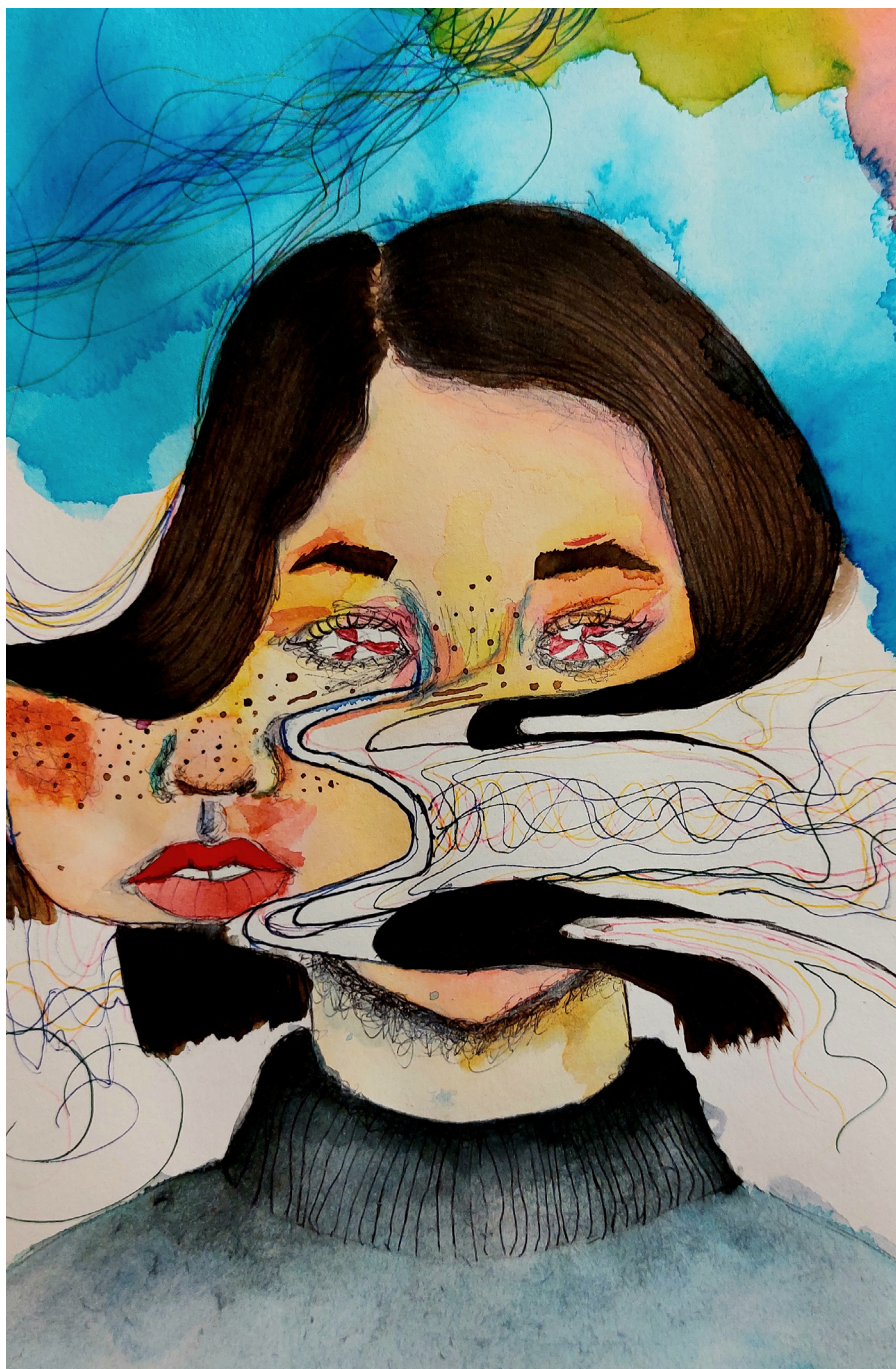


IRANA ODUNEWU

GCSE - Art & Design

Irana enjoyed exploring colour and explored the emotional connections and feelings that colour can provoke. Her studies are exciting and original as she explored health and wellbeing. Her drypoint etchings of trees were particularly impressive with outstanding detail and sensitive, expressive lines.





ANJOLA OGUNSOLA

GCSE - Art & Design



Anjola used patterned surface references in combination with various drawing tools to carefully explore her theme of cultural investigation. She also had fun with various printing techniques to create exciting compositions for her portrait studies.





TIFFANY PORT

GCSE - Art & Design



Tiffany is highly imaginative. She conjured up elaborately detailed characters and figures through her obvious love for inking techniques. She fully explored painting, mixed media and printmaking, experimenting with colour, line and texture. We were impressed with her use of found objects to assemble a mixed media head, which featured brilliantly in her creative final exhibition.



HEIDI TERBLANCHE

GCSE - Art & Design



Heidi explored her interest in colour and marine life. She produced exciting and vibrant sketchbooks that contained beautiful collages and incredible mixed media investigations. Heidi's personal work derived from her own photography, including sea life centres, and images from her travels. Photographic screen printing allowed Heidi to experiment with powdered pigments, acrylics and watercolours for her exhibition.



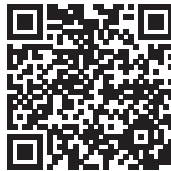


PHOEBE THOMAS

GCSE - Art & Design



Phoebe's pencil drawings are exquisite. Her ram pencil study and drystone wall etchings show incredible detail and sensitivity in mark making, along with a full, soft tonal range. Her trip to the Lake District certainly helped her to maintain a personal approach to coursework and Phoebe was open to exploring landscape painting techniques with brushes and expressive, gestural handling of palette knives.





DEVAKI UDUKALA

GCSE - Art & Design



Devaki demonstrated her interest in the macabre and the influence of the Covid epidemic on the psyche of young people. Devaki further explored her theme through visual studies of the virus, fusing her ideas with colour and collage.



AVA WAREING

GCSE - Art & Design



Thought provoking personal photography, prints and paintings follow Ava's links to and investigation of gender and body awareness. She questions stereotypes and explores the emotional constriction of set standards of beauty and gender, which led to challenging studies, edgy compositions and thought provoking sculptures.



VISHNAVI YOGASIGAMANY

GCSE - Art & Design



Vishnavi's beautiful floral designs were completed using blendable coloured pencils, watercolours and mixed media screen printing techniques. She had a tremendous sense of colour, which added decorative and dramatic elements to her coursework, as she fused figurative work with flowers and crystals.

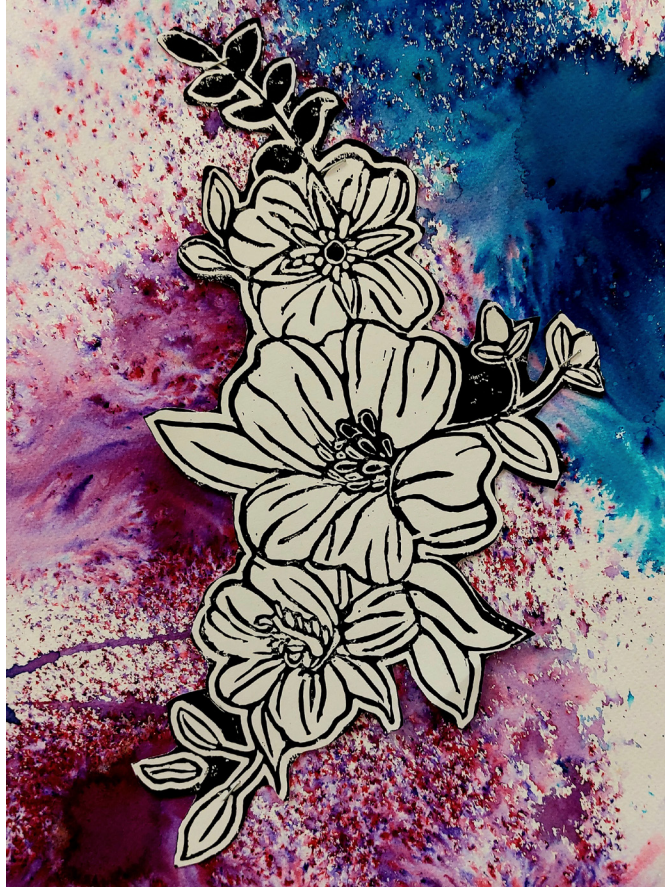




人間四月芳華老
山寺桃花始盛開
長恨春歸無
處不
知轉入此中來

YINUO ZHANG

GCSE - Art & Design



Yinuo is an accomplished artist across a range of materials and techniques, including painting, printmaking and ceramics. Her clay sculptures show Yinuo's ability to carve and decorate beautiful details and she used an exciting, mixed media approach to her screen prints. Her strong cultural connections are prevalent throughout Yinuo's exhibition.



MEG BAZELEY

A LEVEL - Art & Design



Meg demonstrated meticulous skills in printmaking and her drypoint intaglio etchings were highly detailed and expressive. Her drawings explored charcoal, shading pencils and pens, which often related to her prints. Her painting skills of plants, marine life creatures and vegetation included use of oils, acrylics and watercolours. Meg clearly understood when each medium would be most effective. Her interests in Geography, Palaeontology and Marine Biology allowed her to fuse ideas, which led to exciting outcomes. Examples of this are evident in her ceramics.



LEILA BURGE

A LEVEL - Art & Design



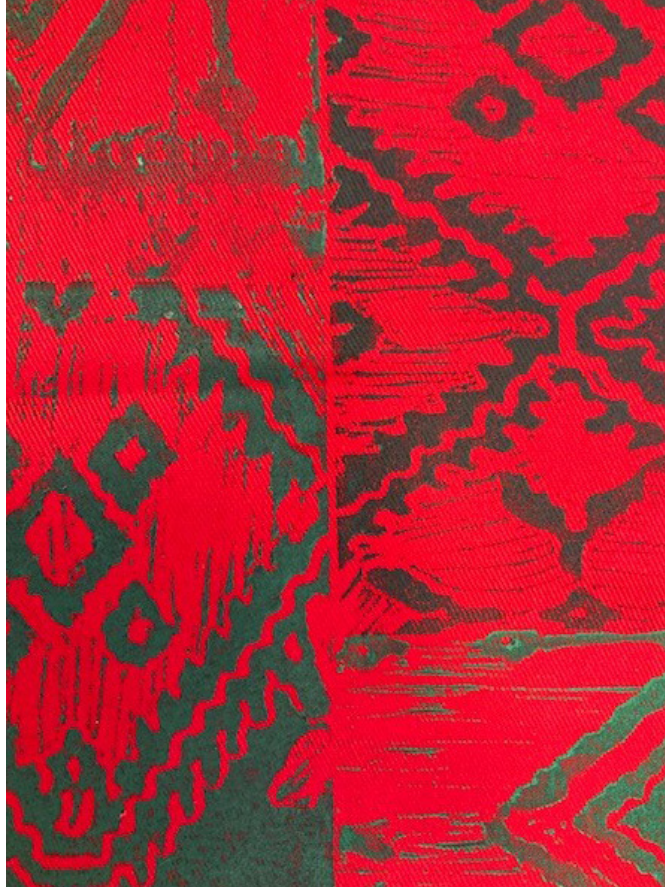
Leila's subject knowledge and drawing skills made her not only an exciting artist but also a very experimental, original and creative one. We were especially impressed by her willingness to take risks in the process of creating her art, for example, adding surface and transfer techniques, photography and mixed media. She was not afraid to tackle subjects that are very personal and challenging, including social and political dogma and the pressures that young women feel today from society and the media. Leila found inspiration for some of her portraits, referencing Bratz dolls and their portrayal of the female form. Leila's personal experiences and myriad of exciting sources aided her in developing an extensive and contemporary exhibition.

Textile Design



ANGELINA AMERICA

GCSE - Textile Design



Inspired by intricate hand-woven designs of Igorot, Angelina developed a large scale chunky woven texture using recycled and hand-dyed fabrics.



SOPHIE BISHOP

GCSE - Textile Design



Inspired by mountains and cherry blossom Sophie developed a final piece using layered screen-printing techniques using torn paper stencils, lino blocks and hand stitched fabric petals.

Nagasaki
Hukuoka
Osaka
Morioka
Hiroshima
Wagoya
Yokohama
Meiji
Naha



AIBHILIN FRENCH

GCSE - Textile Design



Aibhilin's work has been inspired by the colours, sights and sounds of a Japanese street scene.

1955

王	王
王	王

EMILY LUU

GCSE - Textile Design



Emily has been inspired by the artist Wu Changshai to create a block print using a hand carved lino tile, hand finished with gold and blue embroidery. Emily developed this print into a repeat pattern as part of a sleeve detail on her final garment.



KATIE MAYBIN

GCSE - Textile Design



Katie explored a range of different cultures for her project, she was particularly inspired by colour and texture from Mexico. Her final piece explores fashion garments using a range of techniques including sublimation print, hand embroidery and needle felting.



IRANA ODUNEWU

GCSE - Textile Design



Irana's project is a melting pot of influences and ideas for textile design from Korean culture. The final piece focusses on printed textile design inspired by LGBTQ+ flags.



TIFFANY PORT

GCSE - Textile Design



Tiffany has been inspired by costume design with a particular focus on Bio Punk.

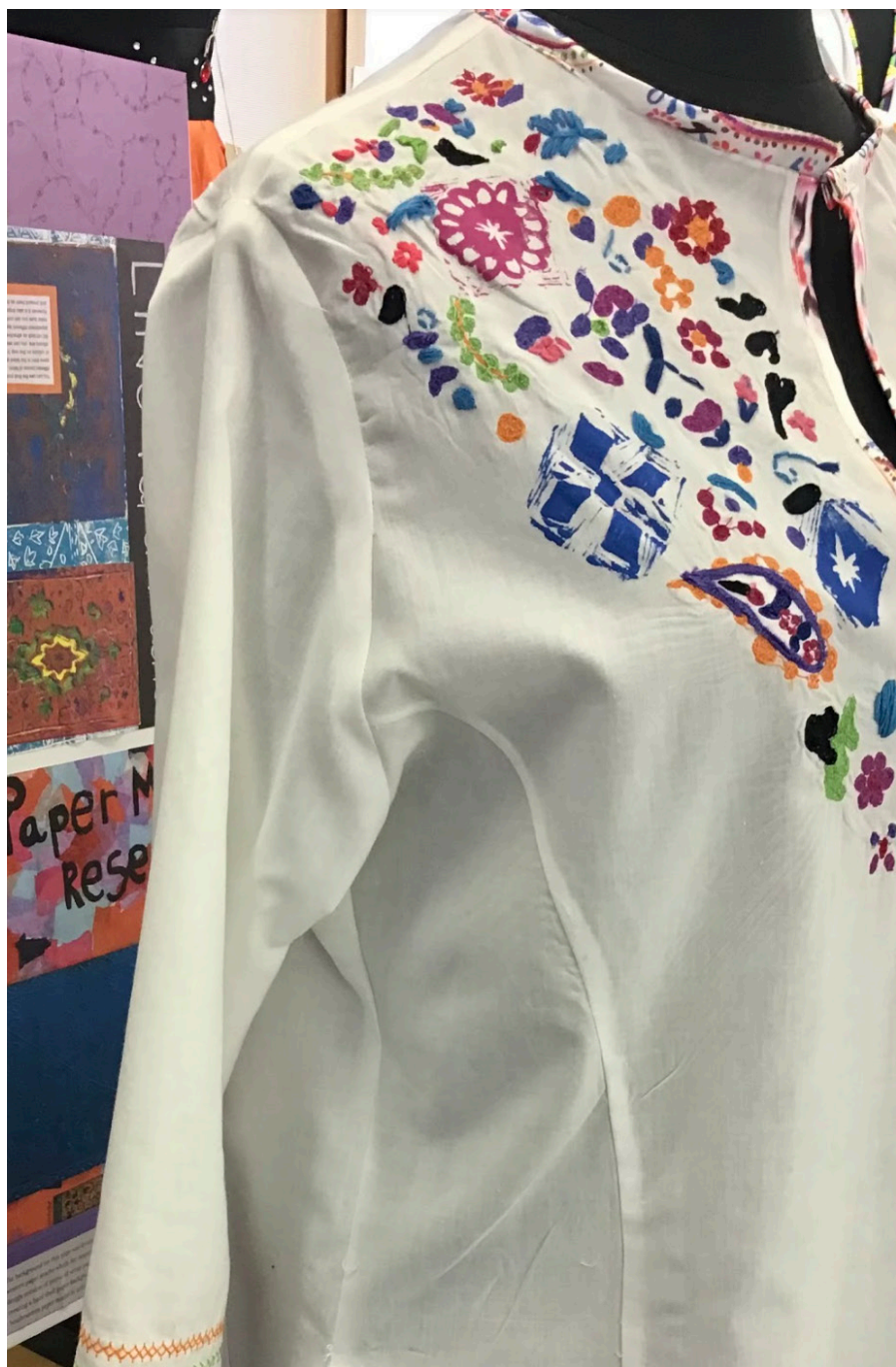


SHREYA SHARMA

GCSE - Textile Design



Shreya has taken inspiration from Indian architecture and tradition decorative embroidery techniques.



YASMIN SOLANKI

GCSE - Textile Design



Yasmin has taken inspiration from traditional Kashmir garment shapes and wooden block printing techniques.

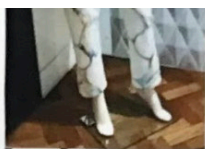
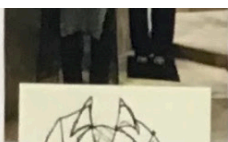
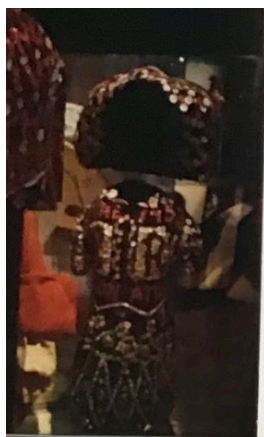


CAITLIN KIRKWOOD

A LEVEL - Textile Design



A personal investigation into Eastern design. Caitlin has been inspired by the Shang Dynasty and the work of contemporary artist Yayoi Kusama.



ORLA PRIDAY

A LEVEL - Textile Design



A personal investigation into the London fashion scene. Inspiration was taken from past and contemporary designers.

Northampton High School
Newport Pagnell Road
Hardingstone
Northampton
NN4 6UU

www.northamptonhigh.co.uk
01604 765765
@ArtsNHS

2023



NORTHAMPTON
HIGH SCHOOL

GDST
GIRLS' DAY SCHOOL TRUST

361 PERMANENCE™
TRANSPARENCY™

High quality flow formula water
based acrylic colour, excellent cover-
ing power. Permanent, highfastness and
water resistant. Can be
thinned with water.
used indoors. Can be thinned with water,
not directly from the pot or mixed with
acrylic mediums. Separation may
occur. Shake well before use.
Most pot, roller or
brush.

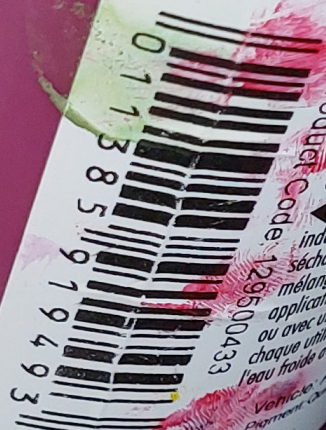
hoher Qualität und guter
Wasserbasis, Dauerhaftigkeit,
Kann draussen verwendet
werden, direkt aus der Tube
entnommen, kann vermisch werden.
Kann draussen verwendet
werden. Kann mit Pinsel, Roller
angewendet werden. Reinigung mit
Wasser.

degradable con agua.
resistencia a la luz y poder
de agua. Puede ser usado
al exterior con agua. Usado
al exterior con medios acrilicos. Puede
ser usado con pincel,
rodillo o brocha.

36.9 US fl. oz.

FOR USA ONLY

ACMT QUALITY
AP
MADE IN AUSTRIA
GOTTESHAUSEN



BN: 20265

Product Code 126500433

Couleur
indélébile et ultra-
résistante. Peut être
mélangée aux médiums
d'application directe
ou avec un médium
chaque utilisation.
l'eau froide avant de
l'appliquer.

Vehicle Acrylic
Pigment

flow formula water
Excellent colour
e, lighthfastness and
r resistant. Can be
r thinned with water,
ion may occur.
y be applied with
knife

247