

INCLUSIVITY BULLETIN



NORTHAMPTON
HIGH SCHOOL

GDST
GIRLS' DAY SCHOOL TRUST

UNDIVIDED

THE GDST IS COMMITTED TO DIVERSITY,
INCLUSION, AND REAL CHANGE

MAY/JUNE 2022

MAY

Mon	Tue	Wed	Thu	Fri	Sat	Sun
						1 ■ ■
2 ■ ■ ■ Early May Bank Holiday	3 ■	4 ■	5 ■	6 ■	7	8 ■
9 ■	10	11	12	13	14 ■	15 ■
16 ■	17 ■	18	19 ■ ■	20	21 ■	22 ■
23 ■	24 ■ ■	25	26 ■	27	28	29 ■
30	31 ■					

Key

* Holy day that usually begins in the evening or at sunset of the previous day

** Date may vary to this because of religious customs

■ Religious/cultural ■ Awareness and events ■ Public holiday

May is action on stroke month, hepatitis awareness month, celiac awareness month and UK national walking month.

■ Religious/cultural

1 - Beltane * *Wicca and Pagan*
 2 - Twelfth day of Ridvan * *Baha'i*
 2 - Birthday of Guru Arjan Dev *Sikh*
 3 - Feast of Saints Philip and James *Catholic Christian*
 3 - Akshaya Tritiya *Hindu and Jain*
 3 - Eid al-Fitr * *Islam*
 4 - Yom HaZikaron * *Judaism*
 5 - Yom Ha'Atzmaut * *Judaism*
 14 - Feast of Saint Matthias *Catholic Christian*
 16 - Vesak *Buddhist*
 19 - Lag BaOmer * *Judaism*
 23 - Birthday of Guru Amar Das *Sikh*
 24 - Declaration of the Báb * *Baha'i*
 26 - Feast of the ascension *Christian*
 29 - Ascension of Baha'u'llah * *Baha'i*
 29 - Yom Yerushalayim * *Judaism*
 31 - Visitation of the Blessed Virgin Mary *Catholic Christian*

■ Awareness and events

1 - International family equality day
 2-8 - Deaf awareness week
 6-8 - TUC's Black workers' conference
 8 - World Red Cross and Red Crescent day
 9-15 - Mental health awareness week
 15 - International day of families
 17 - International day against homophobia, transphobia and biphobia
 19 - Global accessibility awareness day
 21 - World day for cultural diversity for dialogue and development
 22 - International day for biological diversity
 24 - Pansexual visibility day



NORTHAMPTON
HIGH SCHOOL

G D S T
GIRLY DAY SCHOOL TRUST

UNDIVIDED

THE GDST IS COMMITTED TO DIVERSITY,
INCLUSION, AND REAL CHANGE

Deaf Awareness Week

Date: 4th-9th May

Promotes the positive aspects of deafness, social inclusion and general awareness raising.

www.deafcouncil.org.uk

www.actiononhearingloss.org.uk

International Day of Families

Date: 15th May

Provides an opportunity to promote awareness of issues relating to families and increase knowledge of the social, economic and demographic processes affecting them.

International Day Against Homophobia, Biphobia & Transphobia

Date: 17th May

Provides a platform for everyone to make a powerful statement to demand improvements for the quality of life for LGBT people.

www.idaho.org.uk

Mental Health Awareness week

Date: 9th-15th May

Mental Health Awareness Week is open to everyone. It is all about starting conversations about mental health and the things in our daily lives that can affect it.

www.mentalhealth.org.uk



Ramadan (Ends)

Date: 2nd-3rd May

Eid-UI-Fitr*



The exact date is determined by the moon sighting which may vary according to the mosque people follow.

Description

A two days celebration marking the end of fasting and to thank God for his help with their month-long act of self-control. 'Eid Mubarak' greetings are sent.

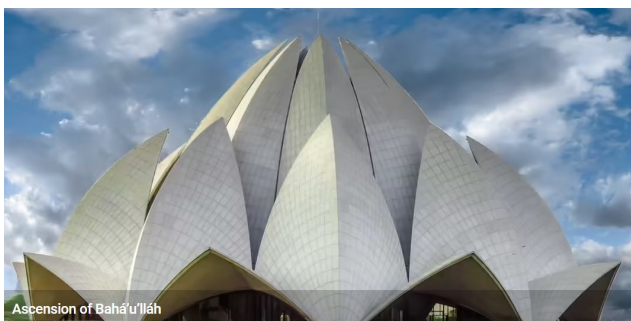
Buddha Day / Wesak (Visakha Puja)

Date: 16th May



Description

Major festival commemorating the birth, enlightenment and death of the Buddha. People often decorate their homes and visit their local temple, offering flowers and burning candles and incense.



Ascension of Bahá'u'lláh

Mental Health Awareness Week

9-15 May 2022

Theme is Loneliness



NORTHAMPTON
HIGH SCHOOL

G D S T
GIRLY DAY SCHOOL TRUST

UNDIVIDED

THE GDST IS COMMITTED TO DIVERSITY,
INCLUSION, AND REAL CHANGE

JUNE

Mon	Tue	Wed	Thu	Fri	Sat	Sun
		1	2 Spring Bank Holiday	3 Platinum Jubilee Bank Holiday	4	5
6	7	8	9	10	11	12
13	14	15	16	17	18	19
20	21	22	23	24	25	26
27	28	29	30			

Key

* Holy day that usually begins in the evening or at sunset of the previous day

** Date may vary to this because of religious customs

■ Religious/cultural ■ Awareness and events

June is motor neurone disease awareness month, stillbirth and neonatal death awareness month, LGBTQ+ pride month, and Gypsy, Roma and Traveller history month.

■ Religious/cultural

2 - Feast of the ascension *Orthodox Christian*
 5 - Pentecost *Christian*
 5-6 - Shavuot * *Judaism*
 12 - Trinity Sunday *Christian*
 12 - Pentecost *Orthodox Christian*
 16 - The feast of Corpus Christi *Catholic Christian*
 16 - Martyrdom of Guru Arjan Dev *Sikh*
 21 - Litha *Wicca and Pagan*
 24 - Nativity of Saint John the Baptist *Christian*
 24 - Feast of the sacred heart of Jesus *Catholic Christian*
 29 - Feast of Saints Peter and Paul *Christian*

■ Awareness and events

4 - International day of innocent children victims of aggression
 11 - Global wellness day
 12 - World day against child labour
 12 - Race unity day
 13-19 - Men's health week
 15 - World elder abuse awareness day
 18 - Autistic pride day
 19 - Father's day
 20 - World refugee day
 20-24 - School diversity week
 20-26 - Refugee week
 21 - Summer solstice
 22 - UK Windrush day
 30 Jun-1 Jul - TUC's LGBTQ+ conference



NORTHAMPTON
HIGH SCHOOL

G D S T
GIRLY DAY SCHOOL TRUST

UNDIVIDED

THE GDST IS COMMITTED TO DIVERSITY,
INCLUSION, AND REAL CHANGE



School diversity week | 20-24 June

Shavuot (Pentecost)

Date: 4th-6th June



Sabbath like restrictions.

Description

A two-day festival that marks the revelation of the Ten Commandments to Moses at Mount Sinai. Starts day before at sundown.

Guru Arjan Dev Martyrdom

Date: 16th June



Description

Approximately 30 million Sikhs around the world will celebrate and remember the religious figure that gave up his life for the Sikh people.

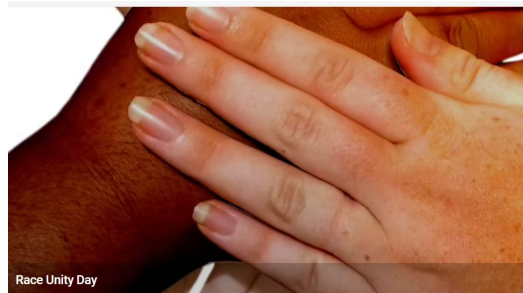


Pride Month 2022

June 1 - June 29

This is your DIABETES WEEK

13-19 June 2022



NORTHAMPTON
HIGH SCHOOL

G D S T
GIRLY DAY SCHOOL TRUST

UNDIVIDED

THE GDST IS COMMITTED TO DIVERSITY,
INCLUSION, AND REAL CHANGE

Refugee Week

Date: 20th-26th June

Discovery and celebration of the contribution of Refugees in the UK.

www.refugeeweek.org.uk

Summer Solstice

Date: 21st June

The summer solstice is the longest day of the year. It's the moment in time when the Earth's tilt towards the Sun is at its maximum and the Sun reaches its highest position in the sky. Traditionally to mark the arrival of summer in United Kingdom people gather at Stonehenge, in Wiltshire to see the sun rise. The Heel Stone and Slaughter Stone, set outside the main circle, align with the rising sun.

Windrush Day

Date: 22nd June

Windrush Day marks the anniversary of the arrival of MV Empire Windrush at the Port of Tilbury, near London, on 22nd June 1948. Those who arrived on the Empire Windrush, their descendants and those who followed them, have made and continue to make an enormous contribution to Britain.

www.windrushday.org.uk

Gypsy, Roma & Traveller History Month

Date: All Month

Aims to educate on the culture and lifestyle of the community.

www.natt.org.uk/grthm

Carers Week

Date: 8th-13th June

Awareness campaign which aims to improve the lives of carers and the people they care for.

www.carersweek.org

Men's Health Week

Date: 10th-17th June

Heighten the awareness of preventable health problems and to encourage early detection and treatment of disease among men and boys.

www.menshealthmonth.org

Learning Disabilities Week

Date: 20th-26th June

National Awareness Week. www.mencap.org.uk

EXTRA RESOURCES - PLEASE LET US KNOW ABOUT ANY RECOMMENDATIONS



Listen - Podcast

How to be anti-racism ally

Singer, writer, activist, and educator Grace Barrett talks on how to be an anti-racism ally.

Grace Barrett, co-founder of the award-winning Self-Esteem Team, founded her new anti-racism education programme, I Am Ally, after acknowledging the inescapable correlation between her complex mental health issues, and racism.

As a mixed race girl growing up in a stable and comfortable family, she now acknowledges she had been in denial about the racist trauma she experienced. Grace discusses the subtle, and the less subtle ways, in which racism can manifest itself, and how young people of colour can empower themselves and others by naming and addressing the discrimination they have experienced.



Watch

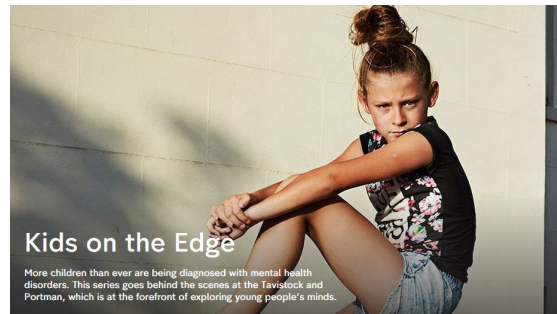
Kids on the Edge on All4

More children than ever are being diagnosed with mental health disorders. This series goes behind the scenes at the Tavistock and Portman, which is at the forefront of exploring young people's minds.

Episode 1 - follows two families who attend the Tavistock's Gender Identity Development Service: the only NHS-run gender identity clinic for children and young people with gender dysphoria;

Episode 2 - meets three children at Gloucester House, the Tavistock and Portman's unique NHS-run school for children with complex emotional, social and behavioural problems;

Episode 3 - One in three UK teenage girls are now said to show symptoms of anxiety or depression. This episode meets two self-harming teenage girls, and shows the support they receive from Tavistock clinicians.



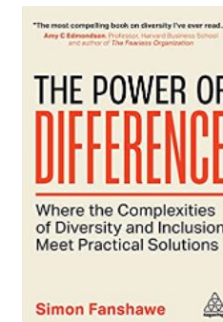
Read

There is no doubt that ***diversity*** is (and should be) firmly on the agenda. Yet good intentions are not enough – real diversity is about creating change.

Despite Diversity and Inclusion being a specific job role in many HR teams (or even entire sub teams) businesses are still struggling to create truly diverse workforces. Why is that? And what makes it so hard to get right?

Movements such as #MeToo and #BlackLivesMatter have ignited a much-needed urgency and added momentum to vital issues that affect people's lives deeply. However, this has also become a source of disagreement and tokenism in many workplaces.

This book shows exactly why it is our differences, and how we value and combine them, that achieves the best results.



NORTHAMPTON
HIGH SCHOOL

GDST
GIRLY DAY SCHOOL TRUST

UNDIVIDED

THE GDST IS COMMITTED TO DIVERSITY,
INCLUSION, AND REAL CHANGE

INCLUSIVITY SCHOOL EVENTS IN MAY AND JUNE 2022

- Monday 9 May, 6pm - **Parent Talks: Teens and Screens, Theatre, all welcome**
- Thursday 12 May - **Accessibility Meeting, 4pm (staff)**
- Monday 16 May, assembly - Ramadan
- Wednesday 18 May - 12 noon - Inclusivity Student Voice Lunch, representatives from Year 5 and Year 6
- Thursday 26 May, 12.15pm - Inclusivity **Staff Working Group** meeting
- Tuesday 28 June, 4pm - **Teach Meet**, theme Inclusion and Diversity (staff and other schools)
- Alternate Mondays, 12.15pm - 12.55pm - Learning Leaders (student research & discussion), F2
- Thursdays, 10.10am - FemSock meeting, Ideas Room
- Fridays, 11.45am-12.20pm - Languages Culture Club, F corridor



NORTHAMPTON
HIGH SCHOOL

G D S T
GIRLY DAY SCHOOL TRUST

UNDIVIDED

THE GDST IS COMMITTED TO DIVERSITY,
INCLUSION, AND REAL CHANGE